



OUR SOLUTIONS FOR

# CAR PARKS

WATERPROOFING | TRAFFIC DECK SYSTEMS  
FIRE PROTECTION | SEALANTS |  
STRUCTURAL & SURFACE REPAIR

 **TREMCO**  
Construction Products Group

# A world leading supplier of building envelope solutions across Asia Pacific

We know that the success of a construction project relies on more than the products that are used, as it takes a lot of skill, knowledge, understanding, and expertise to ensure that those products are applied in the best way possible.

At Tremco Construction Products Group (CPG), we're committed to shaping the future through innovative approaches and sustainable solutions.

This commitment is backed up by the fact that we bring together first-class technology with a customer-focused approach, along with skills that have been built up over multiple decades within very specialised fields across Asia Pacific, to provide a truly unique service.

From joint sealing, façade bonding and insulation through to passive fire protection, performance resin flooring, waterproofing, and roofing solutions – our broad range makes us the ideal partner to solve the complex challenges faced by today's architects, contractors, developers, and trades.

With expertise in a range of product technologies, Tremco CPG provides solutions to help you engineer structures that are more efficient to build and maintain, are virtually impervious to the elements, and can provide a multitude of finishes.

Our brands include Tremco, Dryvit, NewBrick, Nudura, Willseal, Flowcrete, illbruck, Nullifire, Vandex, and Euclid Chemical. Pitchmastic PmB, Nufins, Matacryn, PDS, Prime Resins, and USL products are also marketed by Tremco CPG in Asia Pacific.



## Why Tremco CPG?



### Faster Construction Time

Lightweight, fast-curing and prefabricated products mean less occupant disruption, faster return to service, less revenue lost, and no call-backs.



### Stronger and More Resilient

Our systems are designed for maximum durability, many with service lives far surpassing that of competing systems.



### Cost Effective

A broad range of options that fit any budget – but also help you keep an eye on the future to ensure cost-effective ownership, operation and maintenance.



### One Point of Contact

Products are tested for compatibility and backed by system warranties – all through a single point of contact, with a single point of responsibility.



### Any Look You Want

A wide range of colours and finishes for floors, walls, façades and roofs to provide almost unlimited design potential for your building project.



### Impervious to Weather

Products designed for maximum protection from the elements, including above and below ground-level solutions to prevent the ingress of water.



### Better Insulated

Industry leading brands that provide solutions for more efficient building construction and operation, and exceeding strict energy codes for insulation.



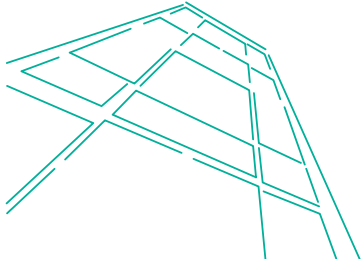
### Leading Edge Sustainability

Construction solutions that meet green building standards, enhancing building efficiency and conscious of the environment that surrounds us.



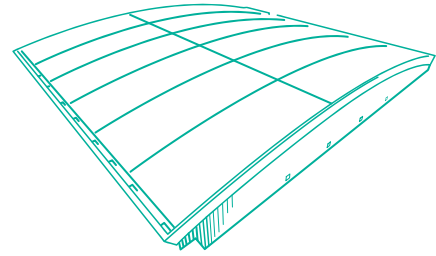
# A FULL RANGE OF SOLUTIONS

We are uniquely positioned to provide single-source products, services and solutions.



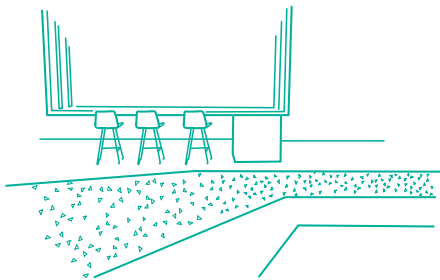
## SEALANTS, GLAZING & FAÇADES

No single glazing system can solve every application. For this reason, Tremco is the only single source supplier offering a comprehensive line of glazing sealants, tapes, spacers and more.



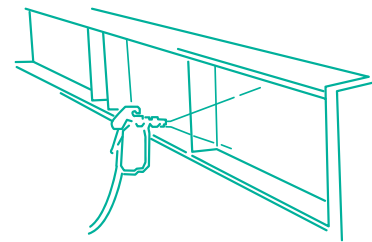
## WATERPROOFING

A comprehensive range of waterproofing solutions designed to protect the building structure and internal assets from the damaging effects of water ingress.



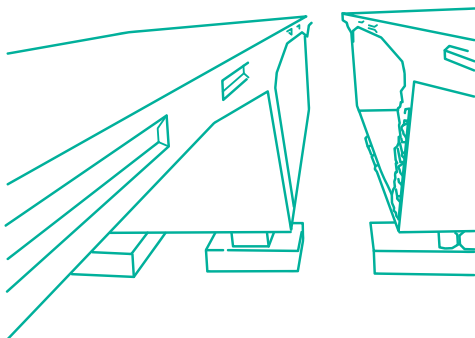
## RESINOUS FLOORING

We have been supplying world-class seamless flooring solutions; from innovative industrial and commercial resin flooring through to cementitious floor screeds and car park traffic coating systems.



## FIRE PROTECTION

We provide a complete firestop system that seals voids, enhances fire protection, provides a thermal insulation barrier and high impact resistance.



## CONCRETE

Wide range of concrete admixtures including cutting-edge PCE technology, macro-synthetic fibres, shrinkage compensating admixtures together with full range of construction products and underground construction technology.

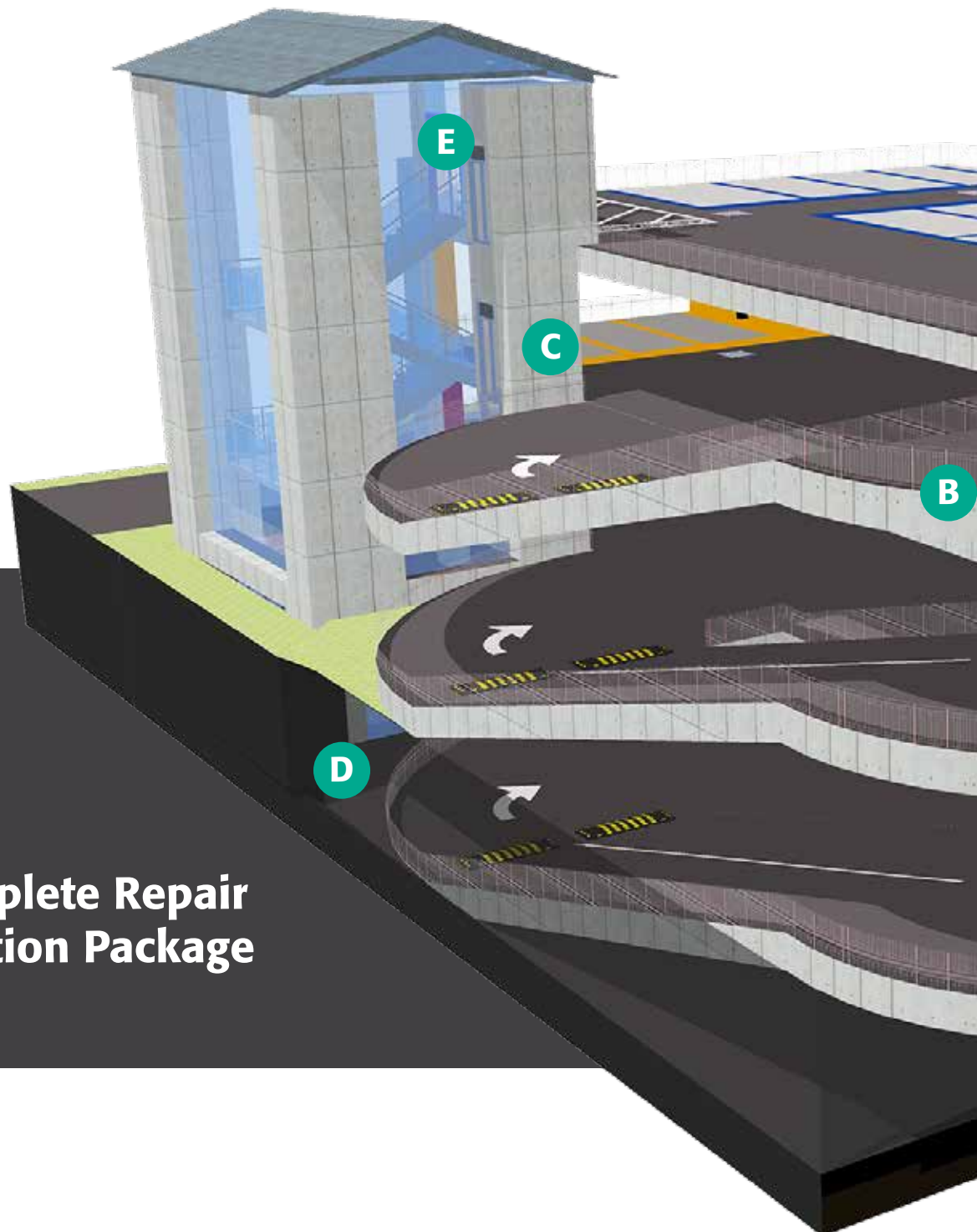
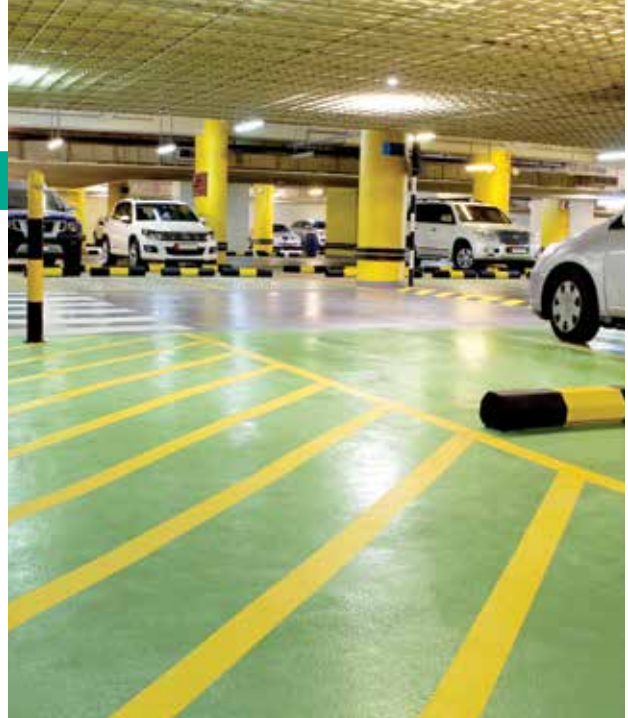
# PRODUCT SELECTION GUIDE\*

	CAR PARK AREAS													
	Steel Columns	Concrete Columns	Facades	Joints	Top Decks	Intermediate Decks	Basement Decks	Ramps	Loading Bays	Service Areas	Concrete Slabs	External Drop Off Zones	Below Grade	Above Grade
<b>Traffic Deck Systems</b>														
<b>Deckshield ID</b> (Trafficable PU coating for basement decks)						●			●	●				
<b>Deckshield ID VHTM</b> (Highly textured PU traffic coating for intermediate decks)						●		●	●	●	●			
<b>Deckshield LBD</b> (Trafficable PU moisture barrier for basement decks)						●					●			
<b>Deckshield ED Rapide</b> (MMA traffic coatings for exposed rooftop decks)					●			●			●	●		
<b>Deckshield UV Linemaker</b> (UV Stable Linemarking )					●	●	●	●	●	●	●	●		
<b>Concrete Repair &amp; Strengthening</b>														
<b>Euco Diamond Hard</b> (Liquid densifier to seal bare concrete)						●	●		●	●	●	●		
<b>VersaSpeed M</b> (Horizontal repair mortar)											●	●		
<b>Eucopatch 20</b> (Polymer modified repair mortar)		●									●	●		
<b>Surflex</b> (Natural floor hardener)											●			
<b>Sealants (Joints &lt;25mm)</b>														
<b>Dymonic 100</b> (Sealant for perimeter caulking and precast concrete panel joints)			●	●	●	●	●	●	●	●	●	●		
<b>Vulkem 45 SSL</b> (Control and Expansion Joints)				●	●	●	●	●	●	●	●	●		
<b>TREMflex 50</b> (Control and Expansion Joints)				●	●	●	●	●	●	●	●	●		
<b>Tremco PU 523</b> (Control and Expansion Joints)				●	●	●	●	●	●	●	●	●		
<b>Tremco SP523</b> (Sealant for perimeter caulking)			●											
<b>Tremco SG300</b> (Silicone sealant for glazing and structural glazing)			●											
<b>Tremco SG555</b> (Silicone sealant for glazing and aluminium panels)			●											
<b>Waterproofing &amp; Roofing</b>														
<b>TREMproof PU 300</b> (Liquid applied, hybrid PU, elastomeric waterproofing membrane)													●	●
<b>TREMproof Amphibia</b> (Pre-formed, self-healing waterproofing membrane)													●	
<b>TREMproof FBM</b> (Pre-formed waterproofing membrane)													●	
<b>TREMproof 201/60</b> (Liquid applied waterproofing)														●
<b>Vandex Super</b> (Crystalline waterproofing technology)													●	
<b>Vandex AM10</b> (Integral crystalline waterproofing admixture)											●		●	
<b>Fire Protection</b>														
<b>Nullifire SC902</b> (Intumescent Coating for structural steel)	●													

\*This guide is used as a general reference. Please consult your local Tremco CPG representative for regional recommendations based on your local building practices and warranty requirements.

SOLUTIONS AND PRODUCTS FOR  
**CAR PARKS**

A wide range of protective repair solutions including traffic deck systems, concrete repair materials, and crack injection resins as well as architectural facade solutions and waterproofing products.



**The Complete Repair  
& Protection Package**

# Protect, Repair & Transform Car Parking Facilities

Today, far from the grey utilitarian structures of the past, multi storey car parks are increasingly being recognised as pillars of the urban landscape offering vehicle owners a safe and welcoming environment to park as well as boasting a well-designed layout and high-end build quality.

From basement to roof-top decks, larger and brighter parking bays provide an increased sense of safety and security for vehicle owners alongside clear navigational markings and preferential parking areas for electric vehicles.

Tremco CPG APAC offers specification professionals working on the design of new-build or refurbishment car park structures a range of deck coating solutions, repair materials and fire protection solutions to choose from.

Refurbishment projects can benefit from utilising Tremco CPG APAC's extensive range of repair products to transform old structures or parking areas direct from one supplier, with one point of contact and under one manufacturer's warranty.





# NEW BUILD & REFURBISHMENT SOLUTIONS



**A. TRAFFIC DECK COATINGS**



**B. CONCRETE REPAIR & STRENGTHENING**



**C. SEALANTS**



**D. WATERPROOFING & ROOFING**



**E. FIRE PROTECTION**



**Tremco Construction Products Group (CPG) represents the combined power of brands including Dryvit, Nudura, Willseal, and Tremco, along with Tremco CPG affiliates Flowcrete, illbruck, Nullifire, Vandex, Euclid Chemical, and USL Brands.**

**Our products and services empower teams to develop, design, restore and engineer structures that are more efficient to build and maintain, are virtually impervious to the elements and can provide any look desired.**

**[www.tremcocpg-asiapacific.com](http://www.tremcocpg-asiapacific.com)**

 **TREMCO**  
Construction Products Group